



WISCONSIN COMMUNITY HEALTH FUND

# Growing & Focusing Resources For Healthy Communities



# Growing Resources – Healthy Communities

## Wisconsin Community Health Fund

### FUND STRATEGY AND VISION PLANNING ORGANIZATIONS

- United Way of Wisconsin
- The Wisconsin Philanthropy Network
- Wisconsin Medical Society Alliance
- Department Health Services
- UW Population Health Institute

### FOUNDING FUND BOARD OF DIRECTORS

- Shelly Schnupp, UWM *Helen Bader Nonprofit Management Institute*
- Liz Feder, *UW Population Health Institute*
- Tim Bartholow, *WEA Trust*
- Theresa Mees, *WCHQ*



# WCHF Impact



**Healthy Communities**

**Additional Resources**

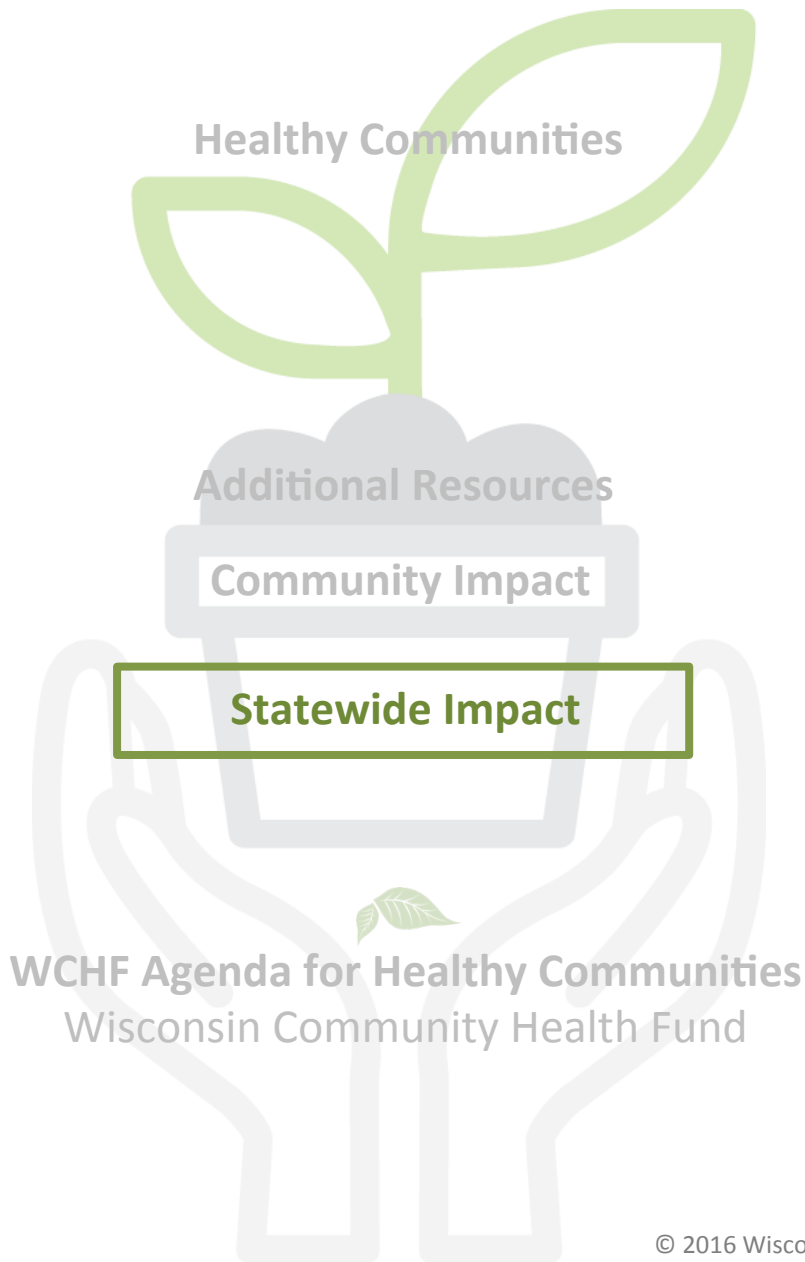
**Community Impact**

**Statewide Impact**



**WCHF Agenda for Healthy Communities**

Wisconsin Community Health Fund



## **WCHF's Aligned Focus to Chronic Disease Prevention and Control**

### **WCHF Agenda for Healthy Communities**

Promotion of Shared Health Priorities:

*Chronic Disease Prevention and Control Program*

Heart Disease and Stroke Alliance

Diabetes Advisory Group

healthTIDE – physical activity and nutrition

*State Health Improvement Plan*

*UW Population Health Institute*

*Other Chronic Disease Partners*

WCHQ, MetaStar, Associations:

Pharmacy, Nursing, Physician,

Dental and Public Health

### **Promotion of Opportunities for Health Improvement**

### **Community Health Education – Events**

# Community Impact – Coalition Support



## WCHF

*Partners*

*Connection to improvement tools*

*Start up funding*

*Promotion of coalition work*

*Community health endowments*

*Testing of evidenced based practices*

## Other Partner Support

*Monthly chronic disease conference call*

*Healthy Wisconsin Leadership Institute*

*(training for new teams and staff support)*

*Future Prevention Conference*

# Connection to Additional Resources

Healthy Communities

**Additional Resources**

Community Impact

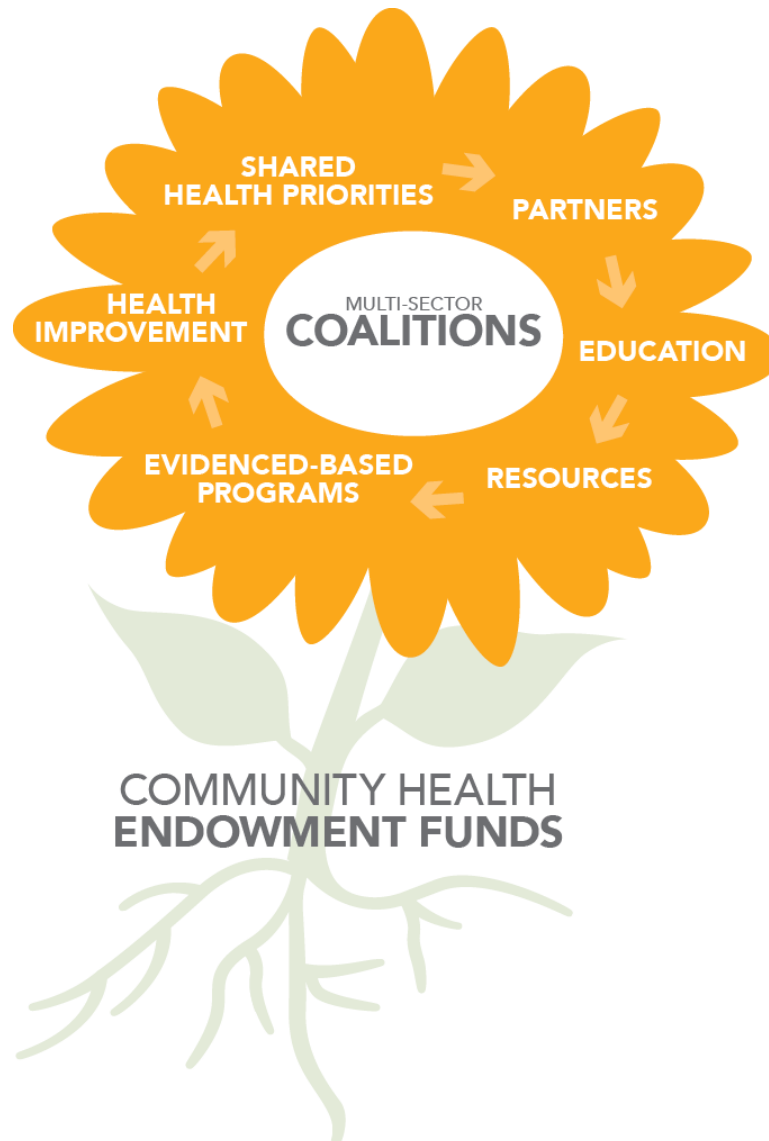
Statewide Impact

  
WCHF Agenda for Healthy Communities  
Wisconsin Community Health Fund

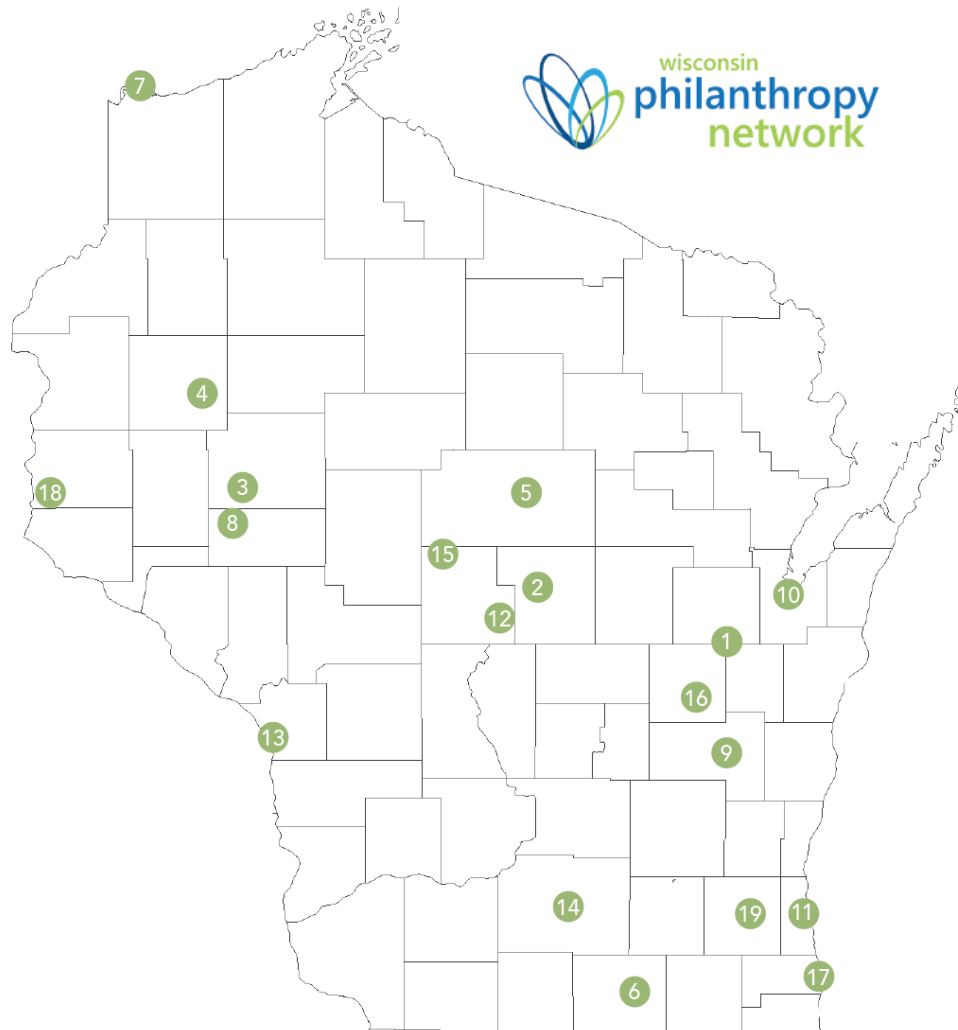
## Connection to Academic & Other Partners

- *Advancing a Healthier Wisconsin Endowment*
- *Wisconsin Partnership Program*
- *Other state or national resources*

# WCHF Improvement Model



# Wisconsin Nationally Certified Community Foundations



- 1 – Community Foundation for the Fox Valley Region
- 2 – Community Foundation of Central Wisconsin
- 3 – Community Foundation of Chippewa County
- 4 – Community Foundation of Dunn County
- 5 – Community Foundation of North Central Wisconsin
- 6 – Community Foundation of Southern Wisconsin
- 7 – Duluth Superior Area Community Foundation
- 8 – Eau Claire Community Foundation
- 9 – Fond du Lac Area Foundation
- 10 – Greater Green Bay Community Foundation
- 11 – Greater Milwaukee Foundation
- 12 – Incourage Community Foundation
- 13 – La Crosse Community Foundation
- 14 – Madison Community Foundation
- 15 – Marshfield Area Community Foundation
- 16 – Oshkosh Area Community Foundation
- 17 – Racine Community Foundation
- 18 – St. Croix Valley Foundation
- 19 – Waukesha County Community Foundation



# Wisconsin Community Health Fund

## Growing Resources — Resource Bridge



Resources/Partners + Evidence-Based Strategies = **Healthy Communities**

# 2015/2016 Agenda for Healthy Communities

- *People*

Join an improvement team and play a direct role in health planning and action

- *Promotion of Improvement Resources*

Connect to state tools and systems that promote health improvement

- *Funding*

Invest in the healthy communities of today and tomorrow

# Wisconsin Million Hearts® CHALLENGE

## WCHF Mini-Improvement Grants

**1** Identify **undiagnosed hypertension**

**2** Move those treated for **HTN** to **control**

**3** Promote **team-based care**

**4** Promote and enhance use of **EHR** among  
Health systems / clinics to manage pts.  
diagnosed or undiagnosed with HTN and  
diabetes

# 02

CDC HEALTH POLICY SERIES

## Towards Sustainable Improvements in Population Health

Overview of Community Integration Structures and Emerging Innovations in Financing

Hester JA,<sup>a</sup> Stange PV,<sup>b</sup> Seeff LC,<sup>b</sup> Davis JB,<sup>c</sup> Craft CA<sup>d</sup>



Concept for a Health Fund is Nationally Supported by CDC

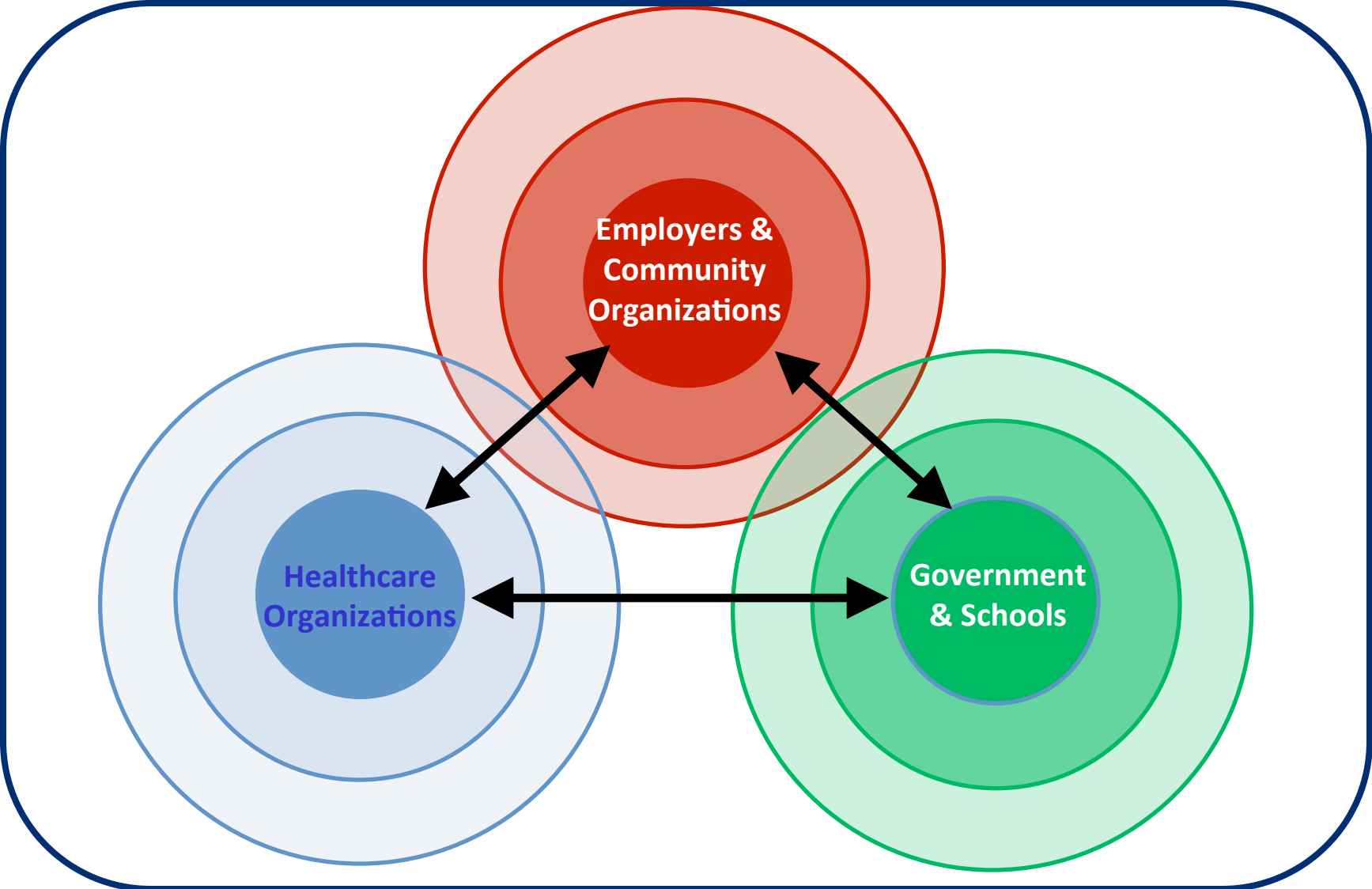
WCHF Participating in a NFF/RWJF National Health Fund Study

- Program-related philanthropy (community foundations, United Way, WCHF)
- Coordination of charitable hospital community benefit
- Pay for success or social impact bonds/investments
- Community development financial institutions
- Prevention and wellness trusts
- Local government – public health, human services, transportation...



U.S. Department of Health and Human Services  
Centers for Disease Control and Prevention

# Through Time Could A Health Fund Become A Super-Integrator? Driver of Health Outcomes



# Wisconsin Community Health Fund – Please Join Us!

## *How You Can Assist WCHF:*

Share Stories  
Engage with Community Leaders  
Enhance Multi-Sector Partners

## *What WCHF Can Do For You – 2016:*

Grow Support for Chronic Disease Improvement  
Promote Agenda for Healthy Communities  
Present Individual and Organization Community Health Stories  
Offer Heart Disease Mini-Improvement Grants  
and Desired Infrastructure Support





WISCONSIN COMMUNITY HEALTH FUND

# Leading a New Legacy & Promise for Healthy Communities

**Rebecca R. Thompson, CPA, CFRE**

Wisconsin Community Health Fund, Inc.

(608) 228-5044

[rebeccat.wchf@gmail.com](mailto:rebeccat.wchf@gmail.com)

[wicomhealthfund.org](http://wicomhealthfund.org)