



WISCONSIN COMMUNITY HEALTH FUND

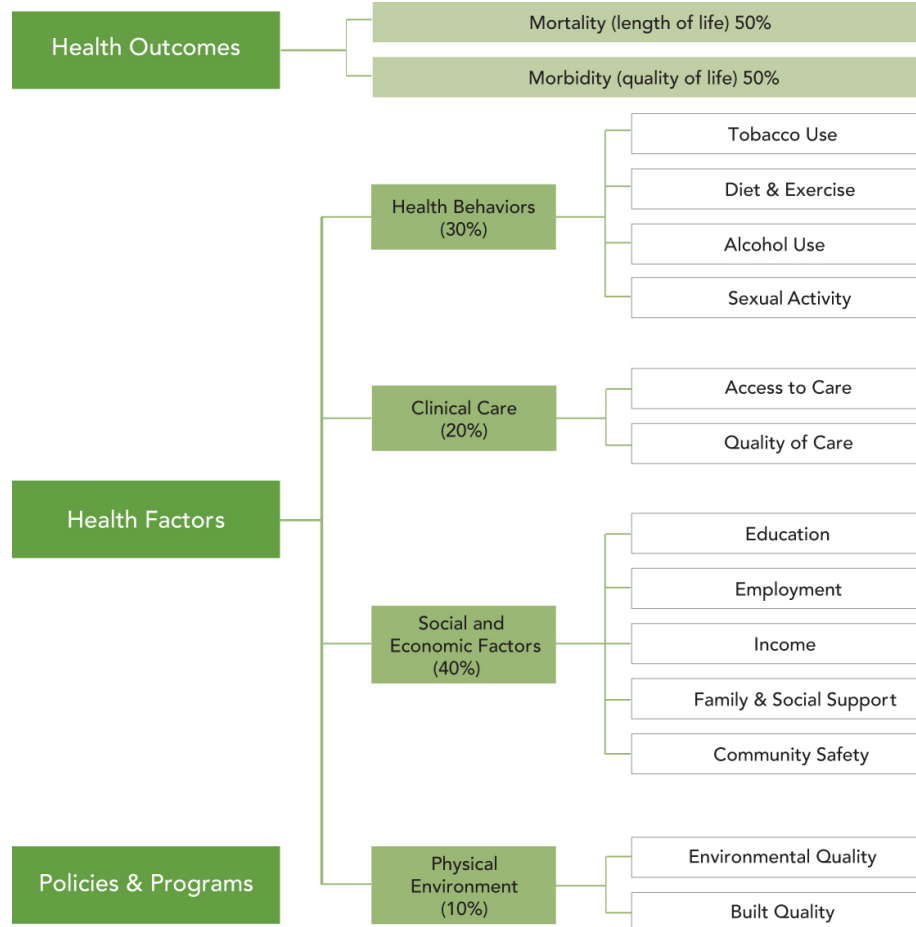
Growing & Focusing Resources for Healthy Communities





Why We Are Here?

Need for Stronger Connections/Bridges To Social Determinants for Health



County Health Rankings Model © 2012 UWPL





Bridge – *A structure carrying a pathway over an obstacle*



Obstacles to Health: *Access to care, Insurance, Access to jobs, Culturally diverse providers and health experiences, Access to healthy food, Transportation, Access to safe communities, Connection to community supports, Social network*





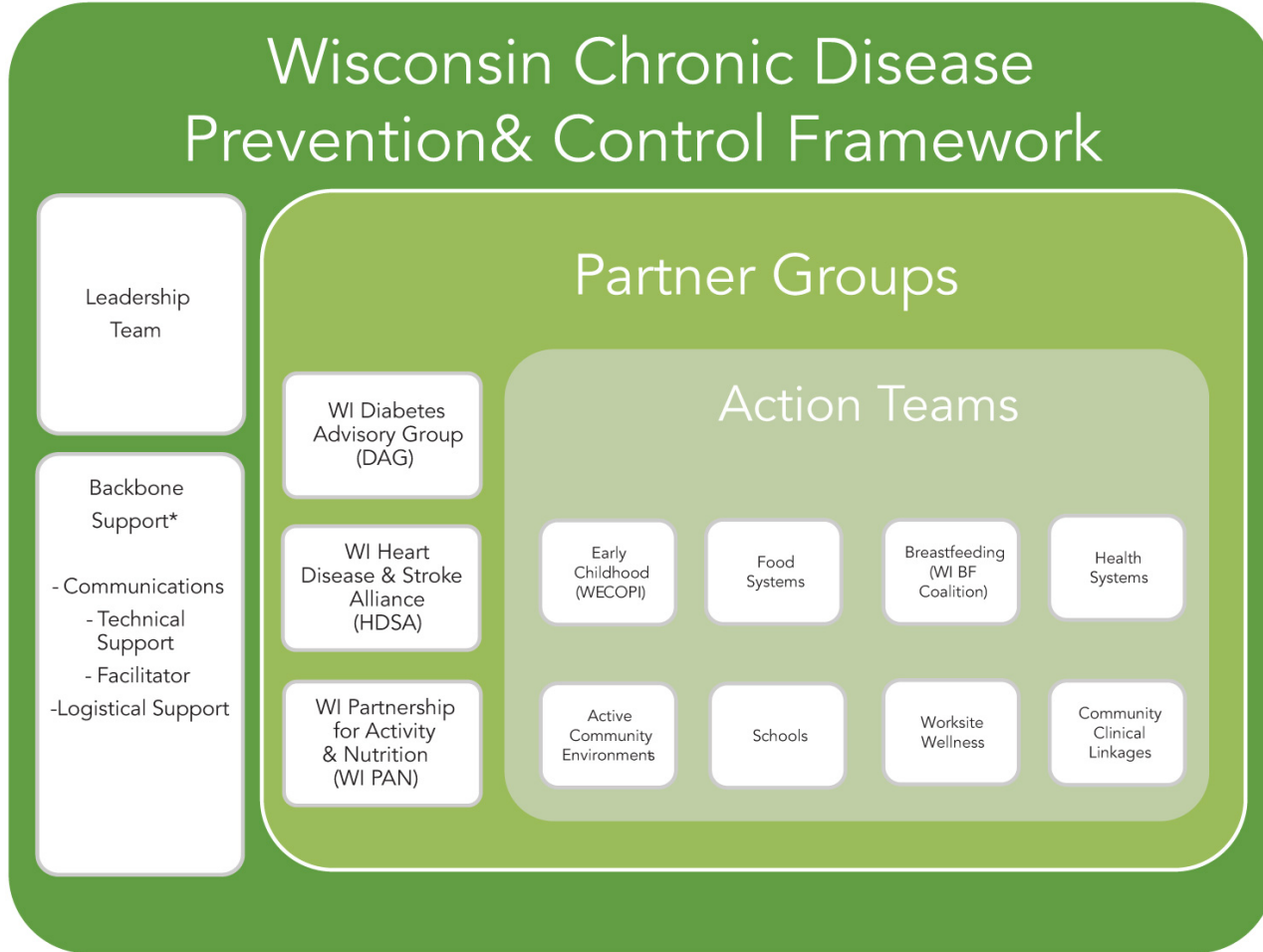
Questions To Consider For Discussion Time

- Where are there opportunities to promote a shared agenda for health?
- What community resources should we reach out to first to support a shared agenda for health (low hanging fruit)?
- What are two top pressing health issues in your community – how could a Health Fund help you?





Wisconsin Chronic Disease Prevention & Control Framework



*The Wisconsin Obesity Prevention Network will comprise part of the backbone.

DRAFT3-17-2014





State Forum Event (5/1/15)

Resource Exploration & Learning Event with UWPHI & NNPHI
Madison, Wisconsin

90+ participants

- Healthcare, business, public health, non-profit and philanthropy sectors

Wisconsin State Journal Press Coverage

Agenda:

- History of Health Fund Journey
- Building a *Vision for Population Health – What Should We Strive For?*
- The Wisconsin Landscape: The Context of Chronic Disease and *What does “Better” Look Like?*
- *Two Community Health Trust Examples* – New York and Massachusetts
- Panel of *Innovative Wisconsin Health Bridging Activity* Examples

World Café Group Discussions and Data Collection:

- Who should be involved in health fund governance?
- How could a health fund be funded?
- Project ideas to bridge health and health care
- What opportunities could a health fund help to realize?

Wisconsin
Community
Health Fund

*Connecting and Investing Resources
for Healthy Communities*





WISCONSIN COMMUNITY HEALTH FUND

Engaging, Aligning and Coordinating Partners For Health Improvement





Resource Bridge



Resources/Partners + Evidence-Based Strategies = **Healthy Communities**





Bolstering Infrastructure for Health Improvement





Growing Resources for Healthy Communities



Wisconsin
Community
Health Fund

*Growing and Investing Resources
for Healthy Communities*





Aiding Shared Statewide Health Priorities





Sector Roles

Bridges to Community Health





Healthcare Sector

Judy Nowicki, RN, BSN, MPA

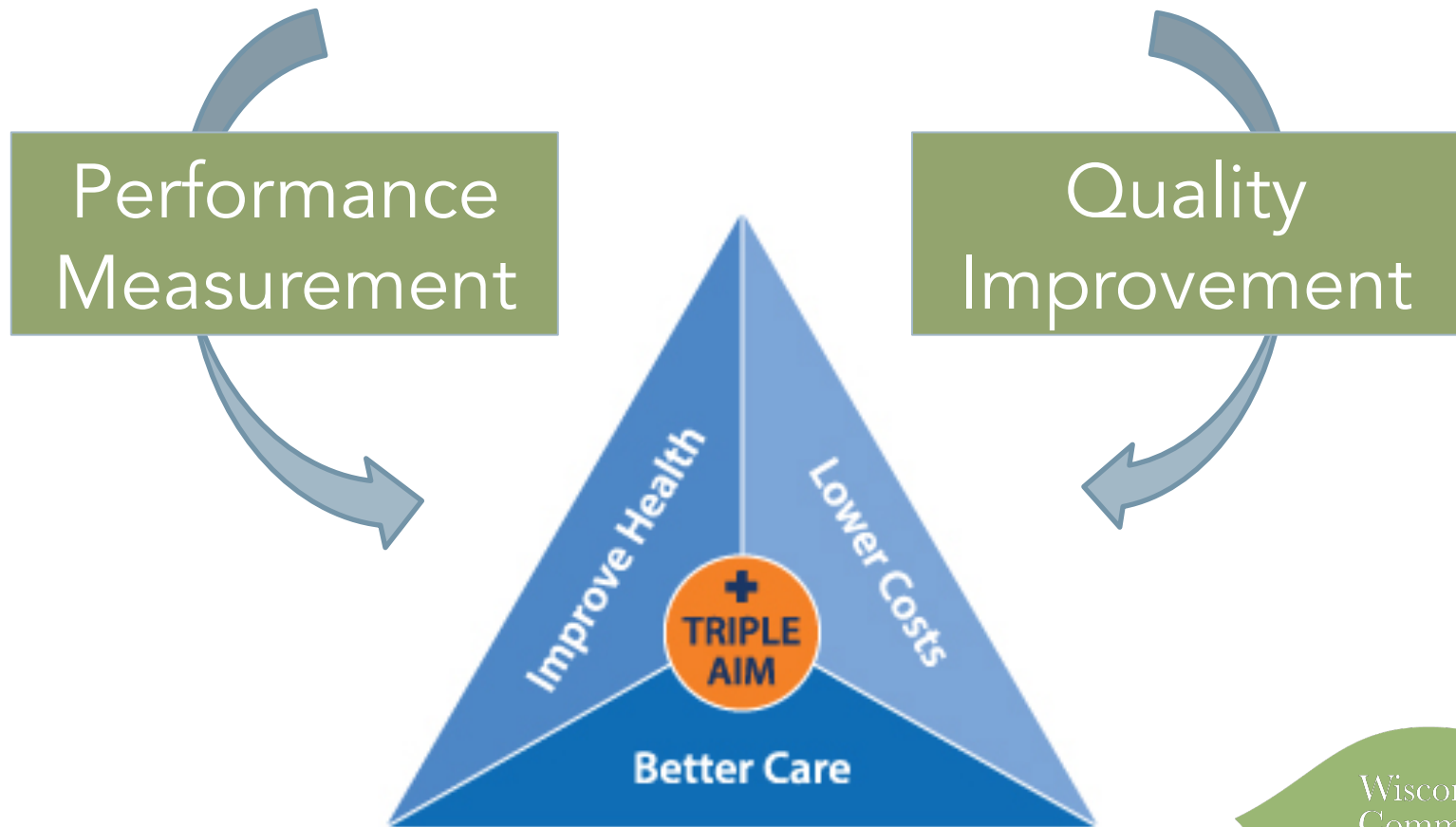
Wisconsin Collaborative for Healthcare Quality



We publicly report and bring meaning to performance measurement information that improves the quality and affordability of healthcare in Wisconsin, in turn improving the health of individuals and communities.

Wisconsin Healthcare Provider Organizations

Health Systems, Medical Groups, Hospitals & Clinics



Triple Aim image from MeHI website at <http://mehi.masstech.org/ehealth/triple-aim>



Performance
Measurement

Quality
Improvement

Why is This Important?

Measurement → shows that performance varies

Improvement → involves sharing best practices

To collaboratively move toward the Triple Aim

Improved Health, Better Care & Lower Costs

Wisconsin
Community
Health Fund

*Coordinating and Investing Resources
for Healthy Communities*





How Can the Health System Sector Assist the Wisconsin Community Health Fund?

- Create partnership and education opportunities among various professions within the health systems' sector – example: medical, dental, pharmacy, public health, mental health
- Connect health system community benefit expectations/ programs to state priorities in health – WCHF's shared Agenda for Healthy Communities
- Consider including health priorities from WCHF's shared Agenda for Healthy Communities as part of local community health assessment and planning goals



How Can the Wisconsin Community Health Fund Support Us?

- Promote quality improvement strategies and tools
- Research funding opportunities to advance the Triple Aim





Public Health

Elizabeth Feder, PhD, UW Population Health Institute

UWPHI is committed to the concept of a mechanism that can funnel dollars from disparate funders into a combined fund to support collective impact projects along aligned goals.

Role of UWPHI

- As researchers:
 - A portfolio of evidence-based and practice-informed strategies and policies for addressing targeted conditions;
 - A source of potential priorities/targets;
 - Health and financial indicators to inform improvement and reinvestment decisions;
- As neutral conveners:
 - Help to build consensus on indicators and measures
 - Help develop strategies and do leg-work for all-in investments
- Promotion of Social Determinants of Health as a focus for health improvement





Philanthropy

Caty Bulgrin, MS, Wisconsin Philanthropy Network

- Wisconsin Gives Report: - <http://wiphilanthropy.wpengine.com/wp-content/uploads/2015/03/Wisconsin-Gives-Report-2014.pdf>
- Transfer of Wealth - <http://wiphilanthropy.org/log-in/transfer-of-wealth-in-wisconsin/>
- Endow Wisconsin - <http://wiphilanthropy.org/initiatives/endow-wisconsin-initiative/>





Business

Tim Bartholow, MD, WEA Trust

How can Business Support the Community Health Fund?

- Investment for improvements in chronic disease in communities and encouraging public investment in the social determinants of health (school graduation, jobs, etc.)

How Can Payers support the Community Health Fund?

- Raise the visibility of unmet opportunities in chronic disease (high blood pressure, diabetes, etc.)



How Can the Health Fund Help Business and Payers?

- Raise the visibility of how communities currently invest in health across their community
- Help communities know where they need to allocate resources for evidence based interventions so as to optimize local health
- Help communities have healthier, best educated, most productive workforce





2015/2016 Agenda for Healthy Communities

- *People*

Join an improvement team and play a direct role in health planning and action

- *Promotion of Improvement Resources*

Connect to state tools and systems that promote health improvement

- *Funding*

Invest in the healthy communities of today and tomorrow





WISCONSIN COMMUNITY HEALTH FUND

Leading a New Legacy & Promise for Healthy Communities

Rebecca R. Thompson, CPA, CFRE

Wisconsin Community Health Fund, Inc.

(608) 228-5044

rebeccat.wchf@gmail.com

wicomhealthfund.org

Wisconsin
Community
Health Fund

*Generating and Investing Resources
for Healthy Communities*

