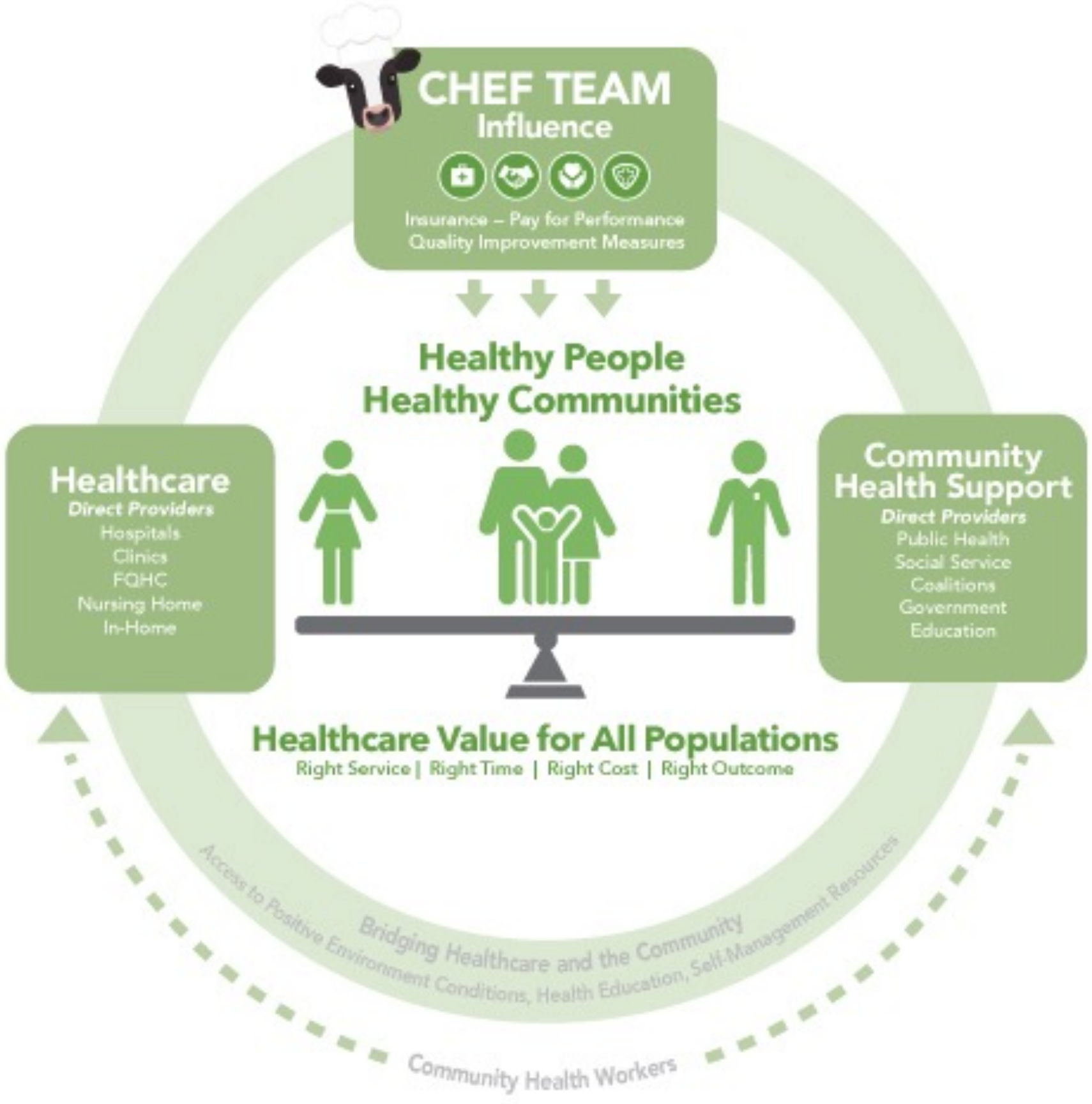


Community Health Value Exchange



To make health work in Wisconsin, a balance between medical care and community supports is required.

WCHEF assists with the formation of community based multi-sector CHEF Teams – Community Health Empowerment Fund Teams – guiding resources enabling health and healthcare value for all populations.

Advancing Community Health



Coordinating Partners (like orchestra sections!) – Business, Philanthropy, Government /Social Service, Health System



Coordinating Resources – Federal, State, Local, Volunteers
Community Health Resource Systems – Program and Endowment Funds



Coordinating Foundational Infrastructure – data systems, evidence-based practice tools, core public health programs



WCHEF Foundational Concepts

Growing and Focusing Resources – Empowering Healthy Communities



Core Area of Focus – Community and State Health Priorities



Multi-Sector Community Health Partners



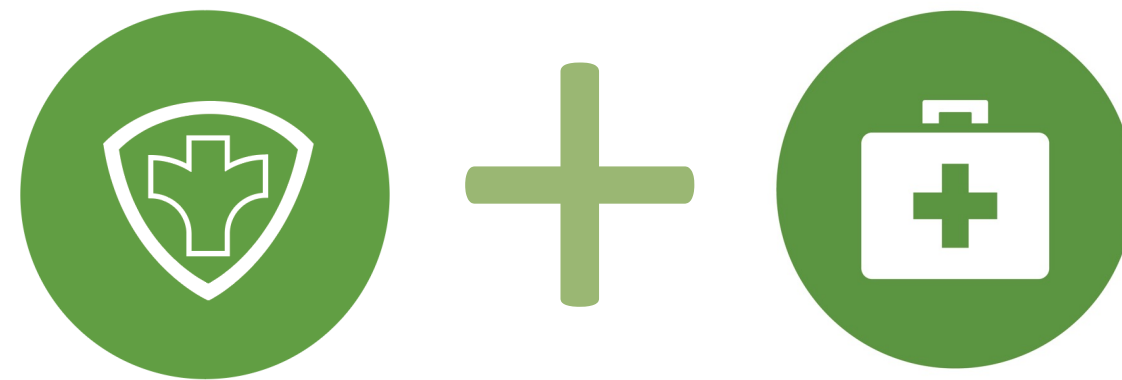
Community Health Resource Vehicles – \$ – Program and Endowment Funds



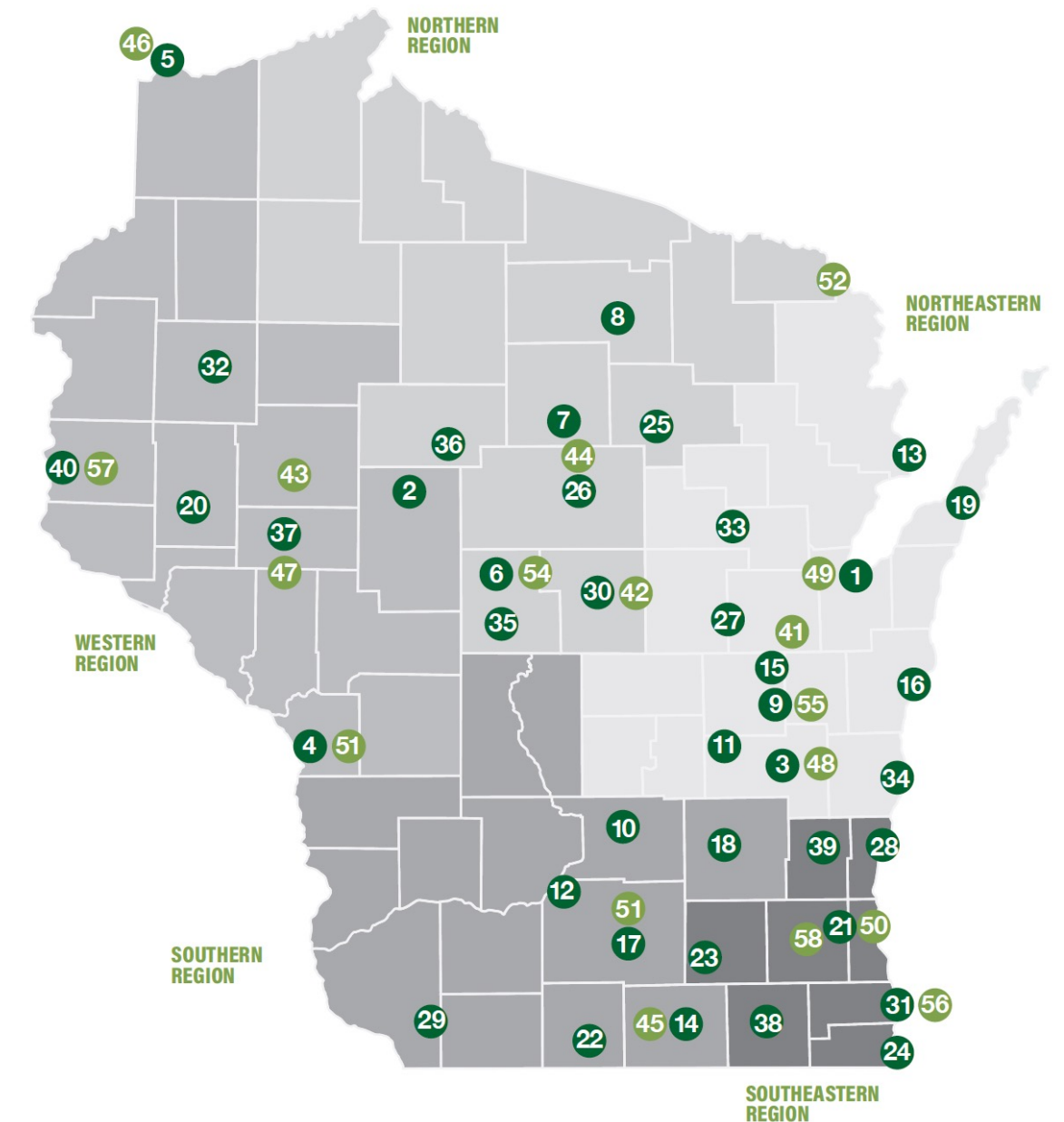
Community Clinical Linkages – Bridges to Health – Examples: Community Health Workers, Pharmacists, WCHEF Leaders

Infrastructure that Supports Community Health Resource Growth

Community Health Improvement Plans/
Community Health Needs Assessment
– Mandated Community Health Process and Team

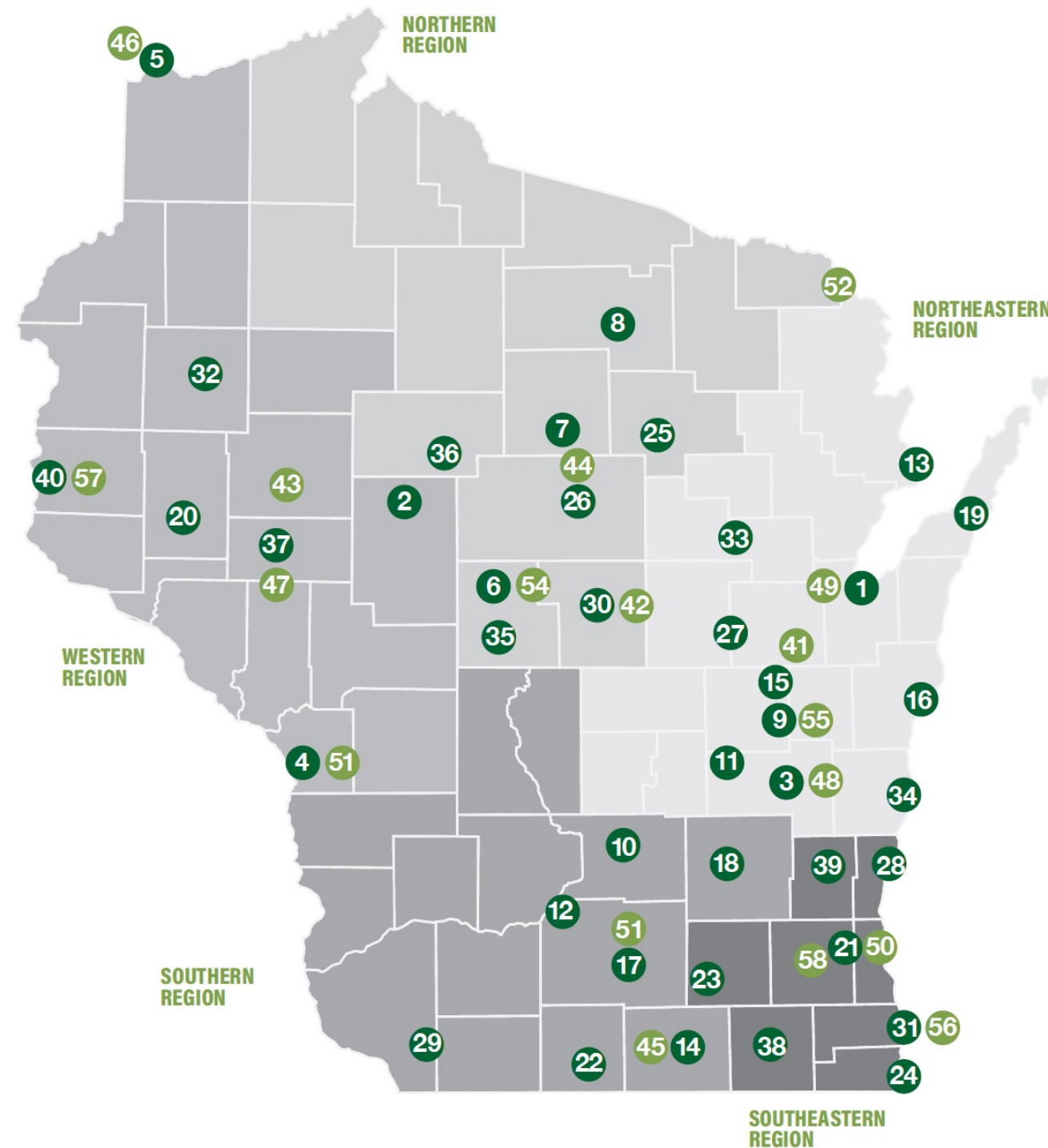


United Way and Community Foundations



Wisconsin Community Health Resource Map

Community Health Resource Partnership Opportunities by Public Health Region



UNITED WAY

1. Brown County United Way
2. Clark County United Way
3. Fond du Lac Area United Way
4. Great Rivers United Way
5. Head of the Lakes United Way
6. Marshfield Area United Way
7. Merrill Area United Way
8. Northwoods United Way
9. Oshkosh Area United Way
10. Portage Area United Way
11. Ripon Area United Way
12. Sauk-Prairie United Way
13. Tri-County United Way
14. United Way Blackhawk Region
15. United Way Fox Cities
16. United Way Manitowoc County
17. United Way of Dane County
18. United Way of Dodge County
19. United Way of Door County
20. United Way of Dunn County
21. United Way of Greater Milwaukee and Waukesha County
22. United Way of Green County
23. United Way of Jefferson & North Walworth Counties
24. United Way of Kenosha County
25. United Way of Langlade County
26. United Way of Marathon County
27. United Way of New London
28. United Way of Northern Ozaukee County
29. United Way of Platteville
30. United Way of Portage County
31. United Way of Racine County
32. United Way of Rice Lake
33. United Way of Shawano County
34. United Way of Sheboygan County
35. United Way of South Wood and Adams Counties
36. United Way of Taylor County
37. United Way of the Greater Chippewa Valley
38. United Way of Walworth County
39. United Way of Washington County
40. United Way St. Croix Valley

COMMUNITY FOUNDATIONS

41. Community Foundation for the Fox Valley Region, Inc.
42. Community Foundation of Central Wisconsin
43. Community Foundation of Chippewa County, Inc.
44. Community Foundation of North Central Wisconsin
45. Community Foundation of Southern Wisconsin
46. Duluth Superior Area Community Foundation
47. Eau Claire Community Foundation
48. Fond du Lac Area Foundation
49. Greater Green Bay Community Foundation, Inc.
50. Greater Milwaukee Foundation
51. La Crosse Community Foundation
52. M & M Area Community Foundation
53. Madison Community Foundation
54. Marshfield Area Community Foundation
55. Oshkosh Area Community Foundation
56. Racine Community Foundation
57. St. Croix Valley Foundation
58. Waukesha County Community Foundation



**Wisconsin
Community Health
Empowerment Fund**

*Growing & Focusing Resources
Enabling Healthy Communities*

W5526 Timber Lane
New Glarus, WI 53574

608-228-5044
wchef.org

Advancing Health Equity



Health equity throughout Wisconsin IS possible through the deployment of CHWs, or vital bridges linking healthcare to needed community supports, and the building of WCHEF Foundational Concepts in every community.

WCHEF FOUNDATIONAL CONCEPTS

- 

Core Area of Focus – Community and State Health Priorities
- 



Multi-Sector Community Health Partners
- 

Community Health Resource Vehicles – \$ – Program and Endowment Funds
- 
Community Clinical Linkages – Bridges to Health – Examples: Community Health Workers, Pharmacists, WCHEF Leaders

Examples of WCHEF Focus on Targeted Health Priorities

HEART DISEASE PREVENTION PARTNERSHIPS



WISCONSIN HEART HEALTH ALLIANCE

Join us for our Heart Health Equity Learning Series!

Heart disease has been - and still remains - the leading cause of death throughout Wisconsin, even throughout the Covid-19 pandemic. Prior to 2020, striking heart disease disparities existed that were exacerbated by the impact of Covid-19. Now, more than ever, Wisconsin organizations need to unite and commit to a focus on heart disease prevention, management, and health equity.

The Wisconsin Department of Health Services and Wisconsin Community Health Empowerment Fund, Inc., collaborating members of the Wisconsin Heart Health Alliance, invite you to re-center your heart health efforts at our Heart Health Equity Learning Series, where you will hear about promising practices and stories of success from heart health experts. Come join us in reaffirming Wisconsin's commitment to heart health equity for all!

- Session 1: Tuesday, February 22, Noon-1pm
- Session 2: Monday, February 28, Noon-1pm
- Session 3: Thursday, March 10, Noon-1pm
- Session 4: TBA



Visit the Heart Health Alliance webpage: www.dhs.wisconsin.gov/heart-disease/alliance.htm for more information on speakers and registration links

Wisconsin Department of Health Services | Wisconsin Community Health Empowerment Fund, Inc. | Wisconsin Heart Health Alliance
dhs.wisconsin.gov/heart-disease/alliance.htm | wicomhealthfund.org

COVID-19 VACCINATION CLINICS, RESOURCES & EDUCATION CAMPAIGN

Green County Boost
Vaccination Recommendations

You do not need any identification or insurance to get vaccinated

	COVID-19 VACCINES				
	PFIZER		MODERNA		NOVAVAX
	6 mo – 4 yrs	5+ yrs	6 mo – 5 yrs	6+ yrs	12+ yrs
Step 1:	First dose	First dose	First dose	First dose	First dose
Wait:	Wait 21 days	Wait 21 days	Wait 28 days	Wait 28 days	Wait 28 days
Step 2:	Second dose	Second dose	Second dose	Second dose	Second dose
Wait:	Wait 8 weeks	Wait 2 months		Wait 2 months	Wait 2 months
Step 3:	Third dose	Pfizer or Moderna bivalent booster*		Pfizer or Moderna bivalent booster	Pfizer or Moderna bivalent booster**

Bivalent boosters better protect you against new COVID-19 sickness
 If you got a Johnson & Johnson vaccine, wait at least 2 months then get a bivalent booster
 Specific instructions for immunocompromised people are on the CDC website
 *5 year olds can only get the Pfizer bivalent booster
 **A monovalent Novavax vaccine is available for adults 18+

Find a COVID-19 vaccine or booster at vaccines.gov/search



ADVANCEMENT OF COMMUNITY HEALTH WORKERS



Health Fund Concept – Best Practice



- Program-related philanthropy (Community Foundations, United Way, WCHEF)
- Charitable hospital community benefit
- Pay for success or social impact bonds/investments
- Community development financial institutions
- Prevention and wellness trusts
- Local government – public health, human services, transportation
- Community Clinical Linkages – Community Health Workers



Wisconsin Community Health Empowerment Fund

*Growing & Focusing Resources
Enabling Healthy Communities*



Rebecca R. Thompson, CPA, CFRE, MPH

Wisconsin Community Health Empowerment Fund, Inc.

(608) 228-5044 | rebeccat.wchf@gmail.com

wchef.org