

Community Health Value Exchange



To make health work in Wisconsin, a balance between medical care and community supports is required.

WCHEF assists with the formation of community based multi-sector CHEF Teams – Community Health Empowerment Fund Teams – guiding resources enabling health and healthcare value for all populations.

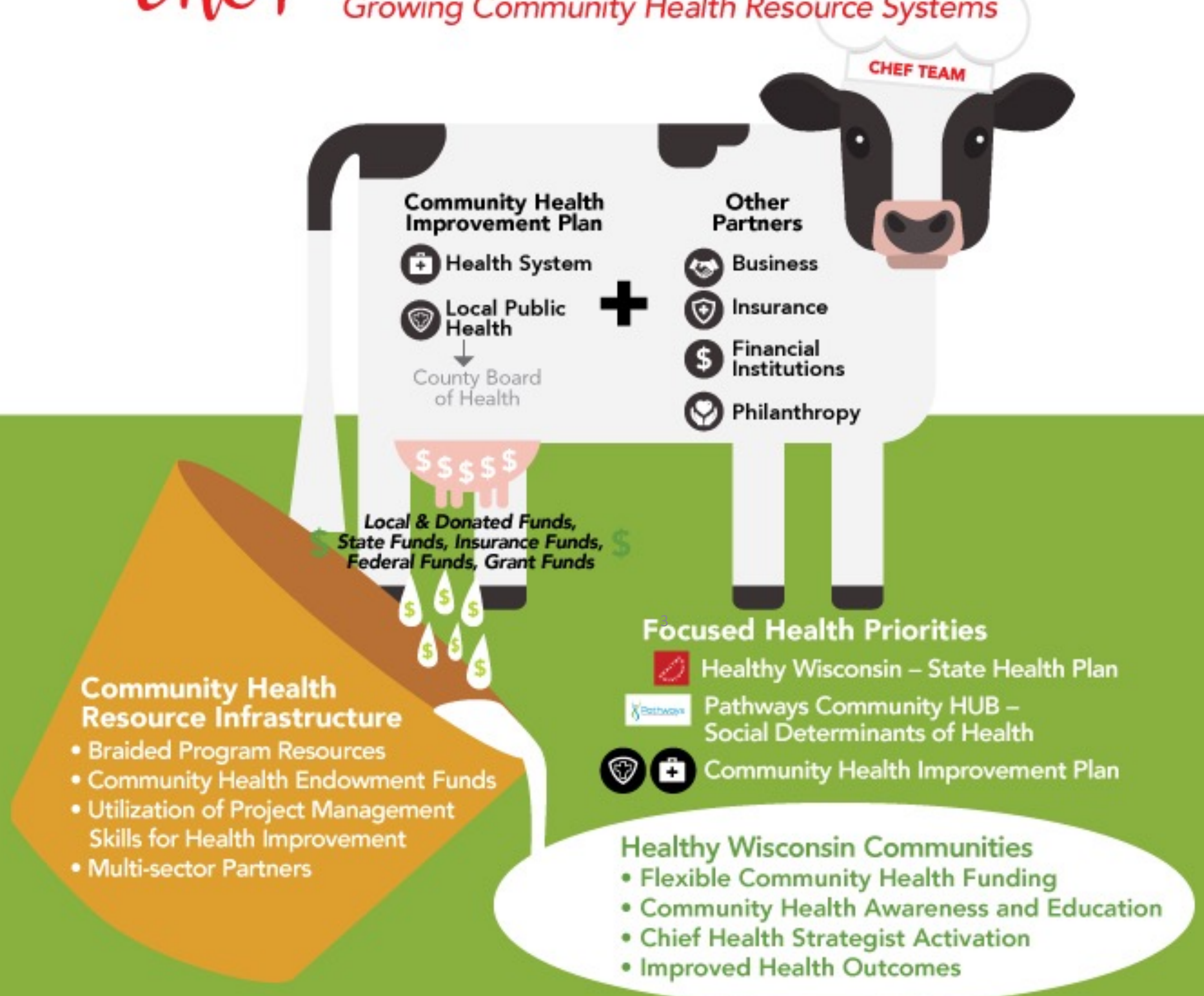
WCHEF Resource Bridge

WCHEF Resource Bridge exists to coordinate multi-sector partners towards the advancement of shared health priorities accelerating opportunities for health improvement and healthy communities. Special focus is placed on the engagement of business and philanthropy partners helping to grow their understanding and leadership in health.



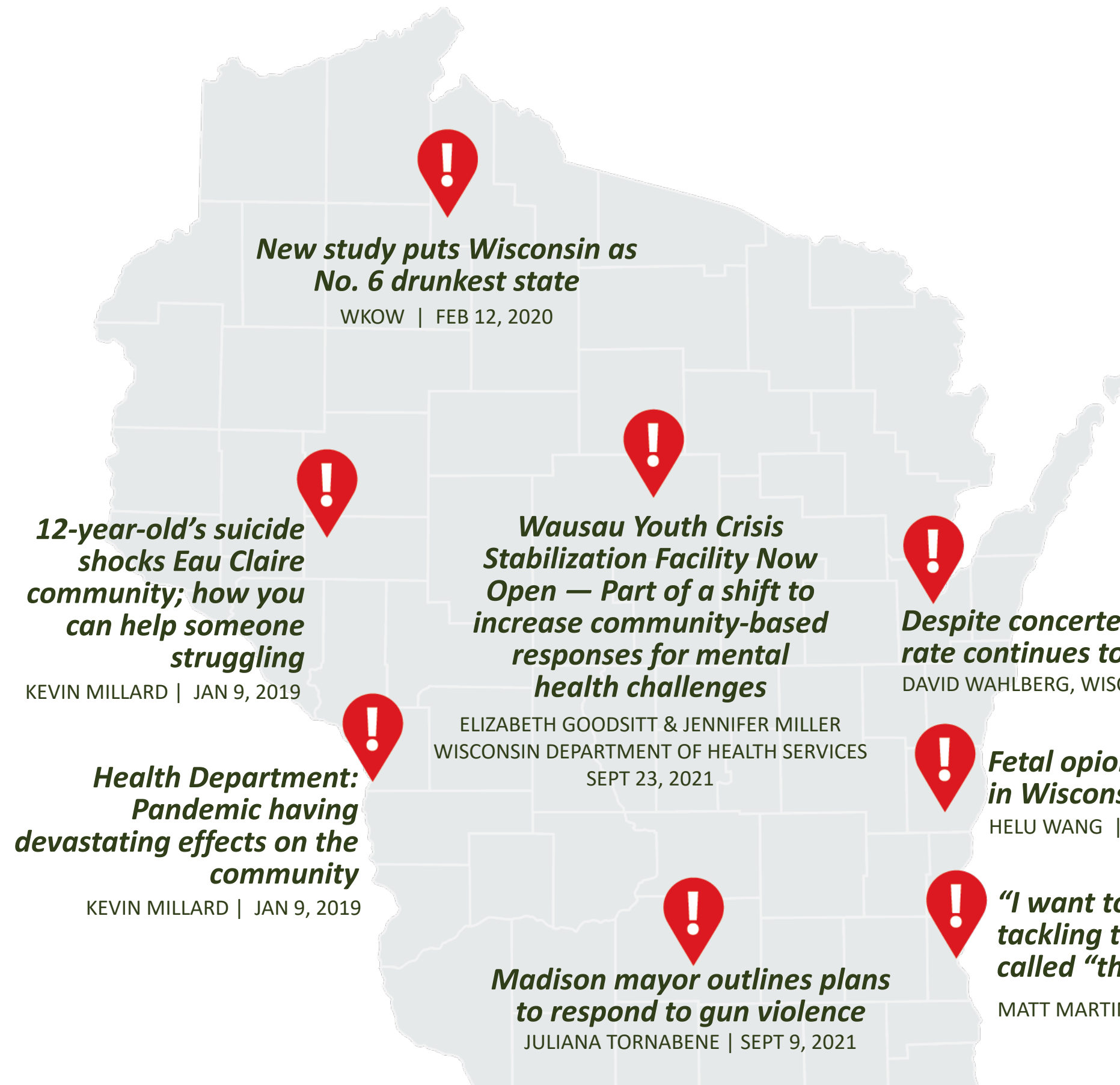
CHEF – Community Health Empowerment Fund

Growing Community Health Resource Systems



WCHEF CHEF Teams – Community Health Empowerment Fund Teams – provide communities with community health infrastructure coordinating both long and short-term resources for community health improvement. With the participation of the local public health department, CHEF Teams strive to direct resources towards focused Community Health Improvement Plan and or State Health Priorities.

Wisconsin Headlines — Health Calls to Action



New study puts Wisconsin as No. 6 drunkest state

WKOW | FEB 12, 2020

12-year-old's suicide shocks Eau Claire community; how you can help someone struggling

KEVIN MILLARD | JAN 9, 2019

Wausau Youth Crisis Stabilization Facility Now Open — Part of a shift to increase community-based responses for mental health challenges

ELIZABETH GOODSITT & JENNIFER MILLER
WISCONSIN DEPARTMENT OF HEALTH SERVICES
SEPT 23, 2021

Despite concerted effort, Wisconsin's obesity rate continues to rise

DAVID WAHLBERG, WISCONSIN STATE JOURNAL | MAR 9, 2020

Health Department: Pandemic having devastating effects on the community

KEVIN MILLARD | JAN 9, 2019

Fetal opioid addiction increases four-fold in Wisconsin

HELU WANG | Feb 28, 2017

Madison mayor outlines plans to respond to gun violence

JULIANA TORNABENE | SEPT 9, 2021

"I want to fix it," Johnson said. Top priority is tackling the city's ongoing lead crisis, which she called "the pandemic before the pandemic."

MATT MARTINEZ | JULY 21, 2021

HEALTH ALARMS*



Adult Obesity	32%	30%
Excessive Drinking	27%	19%
Injury Deaths	84%	72%
Low Birthweight	White – 6%; Black – 15%	
High Residential Segregation		

*County Health Rankings and America's Health Rankings

Common Areas of Health Interest – Wisconsin



**State Health Plan (Healthy WI)
Community Health Improvement Plans
Medicaid Quality Measures**



STATE HEALTH PLAN
Alcohol
Opioids
Tobacco
Nutrition and Physical
Activity
Suicide
Adverse Childhood
Experiences



CHIP PLANS
Alcohol
Diet and Exercise
Drug Use
Sexual Activity
Tobacco Use
Access to Care
Quality of Care
Chronic Disease
Mental Health
Community Safety
Education
Employment and Income
Family and Social Support
Housing and Transit
Oral Health



**Community Health Improvement Plans
Medicaid Quality Measures**

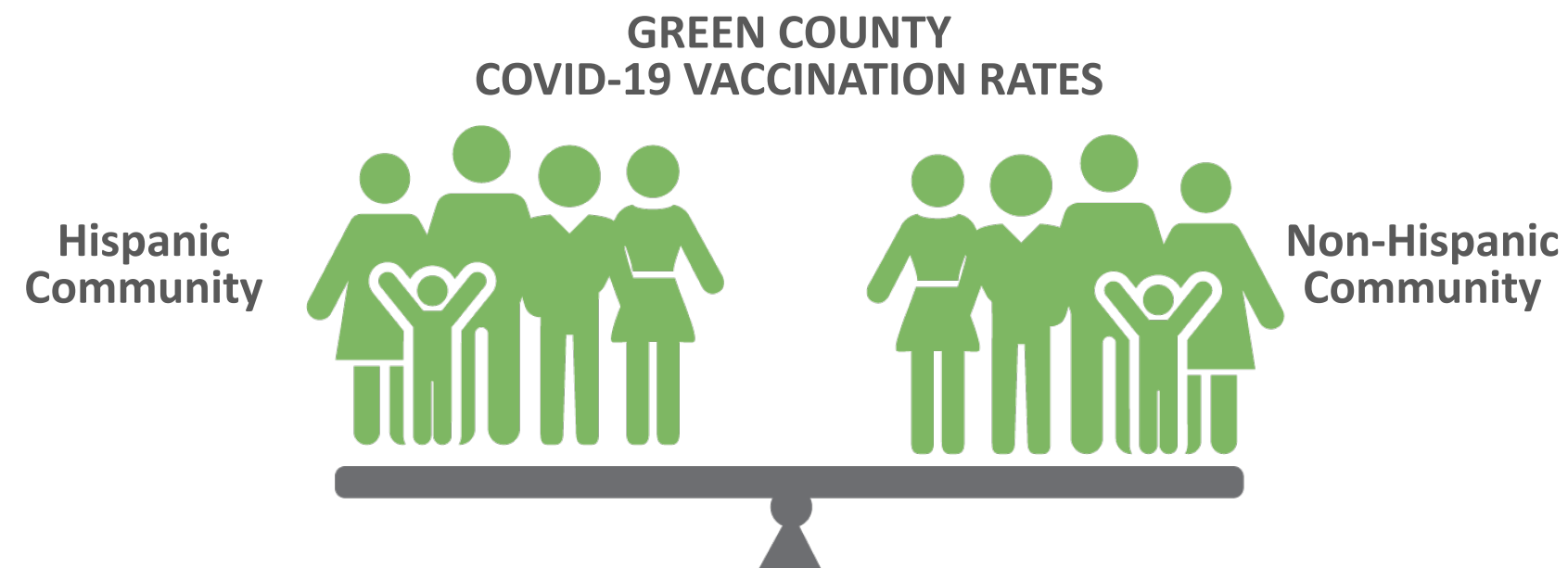


MEDICAID MANAGED CARE QUALITY METRICS
Breast Cancer Screening
Immunizations
Comprehensive Diabetes – A1c – control <8%
Controlling BP – NQF
Depression Medication
AODA – Engagement
Tobacco Cessation – counseling only
Follow-up after Outpatient Discharge
Prenatal and Post-Partum Care
ED Visits
Dental Care – Adults and Kids
Adult BMI
Access to Preventative Care
Mental Health Utilization
Blood Lead Testing



Green County COVID-19 Vaccination Outreach

Closing the Gap – 10%+ → .6 Variance Between Hispanic and Non-Hispanic Vaccination Rates



HEALTHCARE

- Vaccine dissemination
- In-Kind marketing and printing services
- Community health education



PHILANTHROPY

- Vaccine clinic and education promotion
- Vaccine clinic support



GOVERNMENT AND PUBLIC HEALTH

- Public Health – Chief Health Strategist – Identifying health priorities – Sharing community health leadership
- Vaccine dissemination
- Community health education and clinic promotion



BUSINESS

- Vaccine clinic and education promotion
- Recipients of targeted outreach for COVID-19 vaccines and education



Million Hearts[®] in Action – *Green County Heart Health Improvement*

7% Improvement in Blood Pressure Control



HEALTHCARE

- Hypertension Improvement – Health system quality agenda priority
- Physician heart health champion
- Standardized training and blood pressure measurement protocols
- Community Hotline for heart health support
- Implementation of EpicCare Link in the public health department – allowing electronic health information exchange



PHILANTHROPY

- Promotion of community health events



GOVERNMENT AND PUBLIC HEALTH

- Public Health – Chief Health Strategist – Identifying health priorities – Sharing community health leadership
- Community health education and clinic promotion
- Implementation of EpicCare Link – allowing electronic health information exchange between public health and the health system
- Integration of blood pressure measurement into daily work like immunizations



BUSINESS

- Community Health Coalition members and leaders
- Worksite wellness assessment
- Get Green County Moo-ving – Business physical activity competition



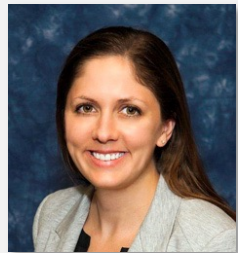
CHEF TEAM IMPACT

WISCONSIN COMMUNITY HEALTH EMPOWERMENT FUND

WCHEF – multi-sector community health resource Infrastructure for statewide health improvement



HEALTHCARE



Gabrielle Rude
Health System Sector
Representative

- Quality improvement consulting
- Learning collaboratives
- Community health education
- Health system community health campaign
- Statewide heart health improvement framework
- Bridges to Health – community and clinical linkage systems
- Learning events
- State Forum for Healthy Communities



PHILANTHROPY



Charlene Mouille
Philanthropy Sector
Representative

- Wisconsin Philanthropy Network member
- United Way 211 – Community health support
- Community health funds – Short and long-term community health resource funds – providing flexible funding for emerging health needs



GOVERNMENT AND PUBLIC HEALTH



Wally Orzechowski
Social Determinants
of Health Advisor



Health Equity Advisor
Coming soon

- Community Health Empowerment Fund Teams – Pilot communities – Green, Wood, La Crosse Counties
- Heart health community education events and consulting
- Community health education and clinic promotion
- Pathways community HUB support
- Summer student community health learning program
- Heart health equity study



BUSINESS



Brett Davis
Insurance Sector
Representative



Paul Jadin
Business Sector
Representative



Arthur Valentine
Financial Institution
Representative

- Bravehearts – corporate heart health improvement program
- Worksite community health assessments
- COVID-19 vaccinations and education
- Business coalition partnerships