



Green County Development Corporation

Business Engagement: *Building Systems of Community Health*

November 19, 2020

Rebecca R. Thompson, CPA, CFRE, MPH
Executive Director
Wisconsin Community Health Fund

11/18/20

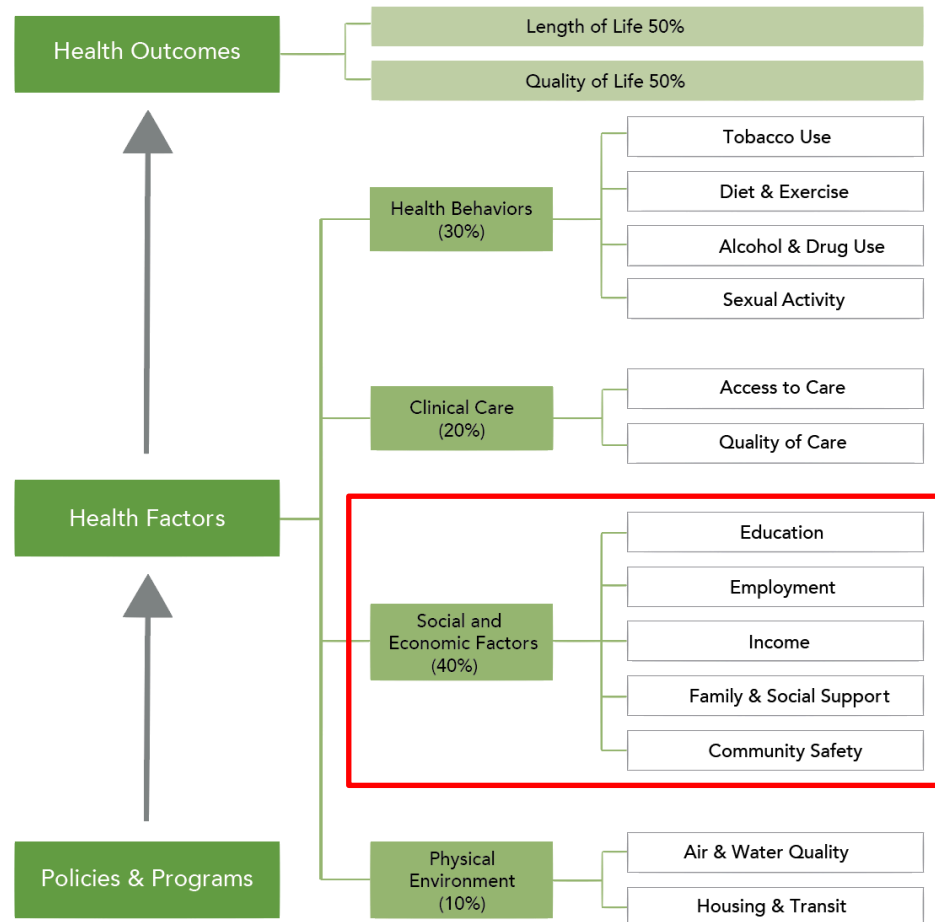
Wisconsin
Community
Health Fund

*Generating and Investing Resources
for Healthy Communities*



Business Sector – Bridge to Health

An Avenue for Health Improvement through *Strengthened Community Links/Bridges to Social Determinants of Health*





Chief Health Strategist

Like an Orchestra Conductor

Philanthropy

Government

Business

Health System



- Cost effective strategy for improving health and safety outcomes
- Reduces unnecessary suffering and saves lives
- Enables practitioners to work across silos and distribute responsibly across vested stakeholders

Green County Public Health **COVID-19 Daily Update**

11/18/2020 8:00am

New Cases **32**

Total
Number of
Cases **1453**

Number of
Active
Cases **171**

Total Deaths of
People Tested
Positive for
COVID-19 **5**

Total Number
of Cases
Recovered **1277**

COVID-19 Activity Level: **Very High**

Be a CHEF

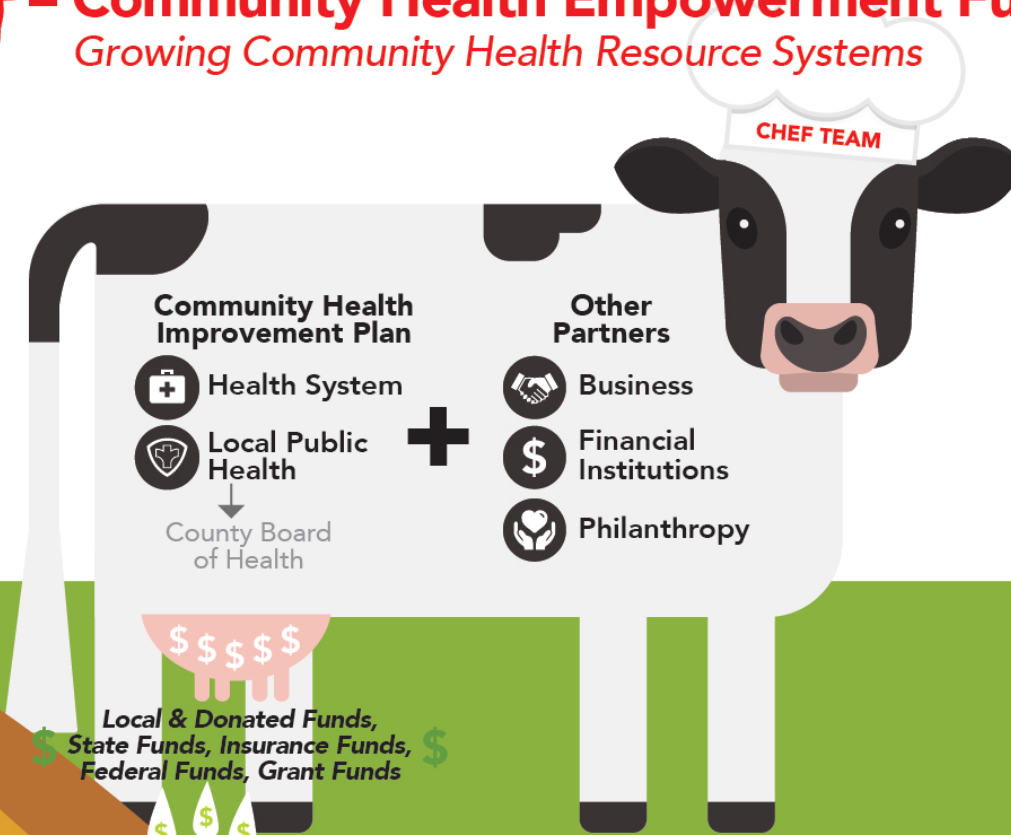


COMMUNITY HEALTH EMPOWERMENT FUND TEAM



CHEF - Community Health Empowerment Fund

Growing Community Health Resource Systems



Community Health Resource Infrastructure

- Braided Program Resources
- Community Health Endowment Funds
- Utilization of Project Management Skills for Health Improvement
- Multi-sector Partners

Focused Health Priorities

-  Healthy Wisconsin – State Health Plan
-  Pathways Community HUB – Social Determinants of Health
-  Community Health Improvement Plan

Healthy Wisconsin Communities

- Flexible Community Health Funding
- Community Health Awareness and Education
- Chief Health Strategist Activation
- Improved Health Outcomes

Pilot Concept: December 2020 – January 2021

Corporate Community Health Advisors



As a response to Covid-19, in partnership with the United Way of Green County and the Wisconsin Community Health Fund – seeking Green County Corporate Volunteer Leaders to serve as – ***Corporate Community Health Advisors***

2 to 4 Executives – willing to volunteer up to 4 hours/week or 2 to 3 times a month

- Receive training from the United Way and WCHF regarding available community health resource supports – food, physical activity, housing, chronic disease management and other community services
- Community Health Bridge Connection – Provide caring follow up to Covid-19 Green County residents via telephone who are seeking support (list provided to the Advisors from United Way hotline)
- Track needs
- Report findings back to GCDC and the Green County CHEF Team – Assess ongoing continuation

Community Health Business Requests

- ***Corporate Community Health Advisors*** – recruit volunteers – marketing support is also needed
- ***Flu Shot Clinics***
 - <https://www.cdc.gov/flu/resource-center/toolkit/index.htm>
- ***Business Covid-19 Guidelines in the Workplace***
 - <https://www.dhs.wisconsin.gov/publications/p02787.pdf>
- ***Businesses as Population Health Managers*** –
Begin to think about and form plans for vaccine dissemination among employees



WISCONSIN COMMUNITY HEALTH FUND

*An Opportunity for Health,
Opportunity for Life Leading a
New Legacy And Promise for
Healthy Communities!*

Rebecca R. Thompson, CPA, CFRE, MPH

Wisconsin Community Health Fund, Inc.

(608) 228-5044

rebeccat.wchf@gmail.com

wicomhealthfund.org